

HomatiX NetIO-1 module

User manual

working version

Table of Contents

<u>Hardware specification</u>	2
<u>Dimensions</u>	2
<u>Power over Ethernet (PoE)</u>	2
<u>PoE standards table</u>	2
<u>Digital outputs</u>	2
<u>Popis ovládání</u>	4
<u>SYSTEM</u>	4
<u>Home</u>	4
<u>Board Info</u>	4
<u>INPUT/OUTPUT</u>	5
<u>Sensor status</u>	5
<u>1-wire bus</u>	6
<u>Infra-red remote control</u>	7
<u>LOG MEMORY</u>	8
<u>View Log</u>	8
<u>CONFIGURATION</u>	9
<u>Sensor settings</u>	9
<u>Actuator settings</u>	10
<u>Log Settings</u>	11
<u>NETWORK CONFIG</u>	12
<u>IP Settings</u>	12
<u>Server settings</u>	13
<u>User access</u>	14
<u>Access control</u>	15
<u>SNMP settings</u>	16
<u>MAINTENANCE</u>	17
<u>Reboot</u>	17
<u>Load defaults</u>	18
<u>Upgrade firmware</u>	19
<u>Log format</u>	20
<u>SNMP</u>	21
<u>Uživatelský podstrom MIB</u>	21
<u>Systémový podstrom MIB</u>	23
<u>Hodnoty defaultního nastavení</u>	24

Hardware specification

Minimum power supply voltage: 5.3V DC, Maximum 15V

Power over ethernet supported

Dimensions

Power over Ethernet (PoE)

PoE standards table

STANDARD	SOURCE									LOAD		REMARKS
	Ethernet RJ-45 connector pin number									Load Voltage	DC Load Connector	
	Source Voltage	1	2	3	4	5	6	7	8			
IEEE 802.3af using data pairs	48 V DC, protected	RX, DC+	RX, DC+	TX, DC-	spare	spare	TX, DC-	spare	spare	(embedded)	Industry Standard for embedded PoE	
IEEE 802.3af using spare pairs	48 V DC, protected	RX	RX	TX	DC+	DC+	TX	DC-	DC-	(embedded)	Industry Standard for embedded PoE	
Intel, Symbol, Orinoco	Usually 12 or 24 V DC	RX	RX	TX	DC+	DC+	TX	DC-	DC-	(embedded)	Most Brands of PoE	
Cisco (OLD old standard)	48 V DC	RX	RX	TX	DC-	DC-	TX	DC+	DC+	(embedded)	Older Cisco polarity is	
Cisco (NEW old standard)	48 V DC	RX	RX	TX	DC+	DC+	TX	DC-	DC-	(embedded)	New Cisco is IEEE compliant	
D-Link (Adapter)	48 V DC	RX	RX	TX	DC ?	DC ?	TX	DC ?	DC ?	5VDC @ 2.5A	DC coaxial 5.5/2.5mm	D-Link PoE Adapter for non-PoE products.
Apple MacIntosh AirPort PoE, Extreme	48 V DC	RX	RX	TX	DC ?	DC ?	TX	DC ?	DC ?	Converted to ???	DC coaxial (???)	Mac Polarity Unknown
HyperLink	Various DC	RX	RX	TX	DC+	DC+	TX	DC-	DC-	same as input	DC coaxial and others available	Variety of Options Available to Fit Most Brands of PoE
NYC Wireless "Roll Your Own"	12 or 24 or 48 V DC	RX	RX	TX	DC+	DC+	TX	DC-	DC-	same as input	DC coaxial or as reqd	New York City Wireless PoE

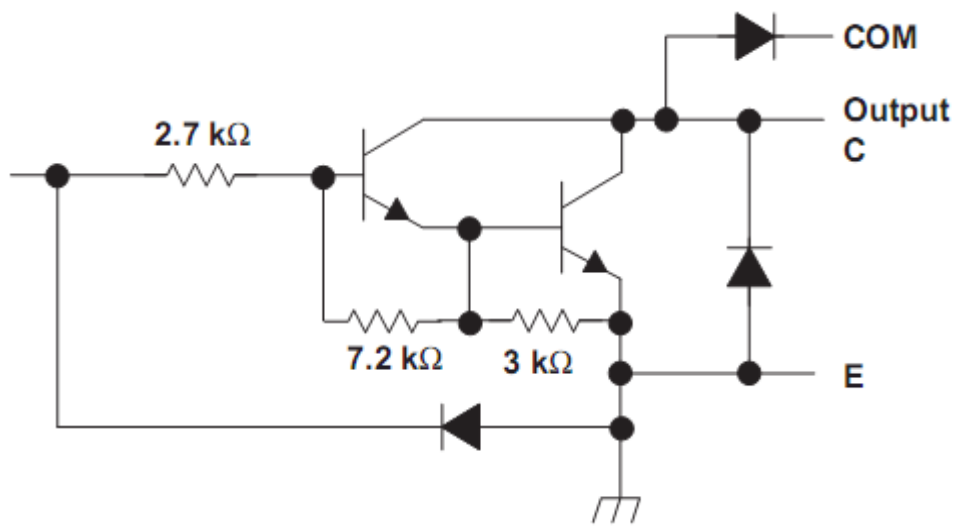
Digital outputs

can drive up to 500mA

Applications include relay drivers, hammer drivers, lamp drivers, display drivers (LED and gas discharge), or line drivers.

Output Clamp Diodes

Relay-Driver Applications



Popis ovládání

SYSTEM

Home

Board Info

SECONS Board info HomatiX NET IO Module
(c) 2008-2009 SECONS Ltd NetIO

SYSTEM
Home
Board info

INPUT/OUTPUT
Sensor status
1-Wire
IR remote

LOG MEMORY
View log

CONFIGURATION
Sensor settings
Actuator settings
Log settings

NETWORK
IP settings
Servers settings
User access
Access control
SNMP settings

MAINTENANCE
Reboot
Load defaults
Upgrade firmware
Log format

HELP
Online help
FAQ
Tech. support
www.secons.com

Uptime: 0000D 00:24:15
Current time: 24.08.2009 07:36:51
Serial number: 12:34:56:78:90:AB
Temperature: 0
Power supply: 0.000

Uptime je od posledního rebootu. Akutální čas je platný pouze pokud je přístupný internet respektive NTP server, který lze konfigurovat v NETWORK=> servers settings. Seriál number odpovídá MAC adrese zařízení.

INPUT/OUTPUT

Sensor status

SECONS**Sensor status**HomatiX NET IO Module
(c) 2008-2009 SECONS Ltd NetIO

SYSTEM

Home
Board info

INPUT/OUTPUT

Sensor status
1-Wire
IR remote

LOG MEMORY

View log

CONFIGURATION

Sensor settings
Actuator settings
Log settings

NETWORK

IP settings
Servers settings
User access
Access control
SNMP settings

MAINTENANCE

Reboot
Load defaults
Upgrade firmware
Log format

HELP

Online help
FAQ
Tech. support
www.secons.com

[Refresh](#)

Sensor	Value	State
1. Sensor0	0.709V	ACTIVE
2. Sensor1	0.006V	---
3. Sensor2	0.629V	ACTIVE
4. Sensor3	0.000V	---
5. Sensor4	0.225V	---
6. Sensor5	0.390V	---
7. Sensor6	0.090V	---
8. Sensor7	0.003V	---

Name	Act 0	Act 1	Act 2	Act 3	Act 4	Act 5	Act 6	Act 7
State	ON	ON	ON	ON	ON	OFF	OFF	OFF
Control	<input type="checkbox"/>	<input type="checkbox"/>	<input type="checkbox"/>	<input type="checkbox"/>	<input type="checkbox"/>	<input type="checkbox"/>	<input type="checkbox"/>	<input type="checkbox"/>

Jména senzorů, jednotka a vzorec, podle kterého se vypočítává zobrazovaná hodnota se nastavuje v CONFIGURATION=>Sensor settings. State je definován na základě rozhodovací úrovně. (nastavuje se pro každý sensor opět v CONFIGURATION=>Sensor settings). Pokud je rozhodovací úroveň nula, tak je místo stavu zobrazeno ---. Nula se bere jako nenastavená rozhodovací úroveň.

1-wire bus

SECONS **One-wire control** **HomatiX NET IO Module**
(c) 2008-2009 SECONS Ltd NetIO

SYSTEM	<input type="text"/>
Home	<input type="button" value="Send request"/>
Board info	
INPUT/OUTPUT	
Sensor status	
1-Wire	
IR remote	
LOG MEMORY	
View log	
CONFIGURATION	
Sensor settings	
Actuator settings	
Log settings	
NETWORK	
IP settings	
Servers settings	
User access	
Access control	
SNMP settings	
MAINTENANCE	
Reboot	
Load defaults	
Upgrade firmware	
Log format	
HELP	
Online help	
FAQ	
Tech. support	
www.secons.com	

Infra-red remote control

SECONS IR Remote Control HomatiX NET IO Module
(c) 2008-2009 SECONS Ltd NetIO

SYSTEM
Home
Board info

INPUT/OUTPUT
Sensor status
1-Wire
IR remote

LOG MEMORY
View log

CONFIGURATION
Sensor settings
Actuator settings
Log settings

NETWORK
IP settings
Servers settings
User access
Access control
SNMP settings

MAINTENANCE
Reboot
Load defaults
Upgrade firmware
Log format

HELP
Online help
FAQ
Tech. support
www.secons.com

RC-5
Wizard mode

Supported protocols:

- RC5

Wizard mode je dostupnou pouze pokud PC, na kterém je stránka IR otevřena má přístup na internet a prohlížeč má povolený javascript.

LOG MEMORY

View Log

SECONS Log storage
HomatiX NET IO Module
(c) 2008-2009 SECONS Ltd NetIO

#	Time	Sensor0	Sensor1	Sensor2	Sensor3	Sensor4	Sensor5	Sensor6	Sensor7	Actuator	Act 1	Act 2	Act 3	Act 4	Act 5	Act 6	Act 7
223	24.08.2009 14:15:25	ON	ON	ON	ON	ON	ON	ON	ON	ON	OFF	OFF	OFF	OFF	OFF	OFF	OFF
224	24.08.2009 14:15:35	ON	ON	ON	ON	ON	ON	ON	ON	ON	OFF	OFF	OFF	OFF	OFF	OFF	OFF
#	Time	Digital change															
225	24.08.2009 14:20:51	Sensor0 has changed to active Sensor1 has changed to active Sensor2 has changed to active Sensor3 has changed to active Sensor4 has changed to active Sensor5 has changed to active Sensor6 has changed to active Sensor7 has changed to active Actuator has changed to active															
226	24.08.2009 14:22:30	Act 4 has changed to active															
227	24.08.2009 14:24:09	Sensor3 has changed to inactive Act 4 has changed to inactive															
228	24.08.2009 14:24:11	Sensor3 has changed to active Act 4 has changed to active															
#	Time	Sensor0 V	Sensor1 V	Sensor2 V	Sensor3 V	Sensor4 V	Sensor5 V	Sensor6 V	Sensor7 V								
229	24.08.2009 14:25:59	0.767	0.716	0.345	0.306	0.303	0.719	0.409	0.303								
#	Time	Sensor0	Sensor1	Sensor2	Sensor3	Sensor4	Sensor5	Sensor6	Sensor7	Actuator	Act 1	Act 2	Act 3	Act 4	Act 5	Act 6	Act 7
230	24.08.2009 14:25:59	ON	ON	ON	ON	ON	ON	ON	ON	ON	OFF	OFF	OFF	ON	OFF	OFF	OFF
#	Time	Sensor0 V	Sensor1 V	Sensor2 V	Sensor3 V	Sensor4 V	Sensor5 V	Sensor6 V	Sensor7 V								
231	24.08.2009 14:26:09	0.819	0.306	0.719	0.303	0.303	0.719	0.409	0.306								
#	Time	Sensor0	Sensor1	Sensor2	Sensor3	Sensor4	Sensor5	Sensor6	Sensor7	Actuator	Act 1	Act 2	Act 3	Act 4	Act 5	Act 6	Act 7
232	24.08.2009 14:26:09	ON	ON	ON	ON	ON	ON	ON	ON	ON	OFF	OFF	OFF	ON	OFF	OFF	OFF

Home | [Prev](#)

Pouze ve verzi, která logování podporuje.

Výpis 10 položek na stránku.

Home – skok na první položku v logu

Prev – skok na předchozích 10 položek

Next – skok na dalších 10 položek

End – skok na posledních 10 položek

Pokud je zapnutý alarm mode logování, tak se vypisuje „Sensor0 has change to active...“ jinak se vypisuje tabulka s ON/OFF stavy.

CONFIGURATION

Sensor settings

SECONS Sensor configurationHomatiX NET IO Module
(c) 2008-2009 SECONS Ltd NetIO

SYSTEM
[Home](#)
[Board info](#)

INPUT/OUTPUT
[Sensor status](#)
[1-Wire](#)
[IR remote](#)

LOG MEMORY
[View log](#)

CONFIGURATION
[Sensor settings](#)
[Actuator settings](#)
[Log settings](#)

NETWORK
[IP settings](#)
[Servers settings](#)
[User access](#)
[Access control](#)
[SNMP settings](#)

MAINTENANCE
[Reboot](#)
[Load defaults](#)
[Upgrade firmware](#)
[Log format](#)


HELP
[Online help](#)
[FAQ](#)
[Tech. support](#)
[www.secons.com](#)

Sensor name	Unit	Value	Formula	Threshold	State	
1 Sensor0	V	Absolute voltage	(X+ 0.000)# 1.000 / 1.000	0.500	Normal	Update
2 Sensor1	V	Absolute voltage	(X+ 0.000)# 1.000 / 1.000	0.000	Normal	Update
3 Sensor2	V	Absolute voltage	(X+ 0.000)# 1.000 / 1.000	0.001	Normal	Update
4 Sensor3	V	Absolute voltage	(X+ 0.000)# 1.000 / 1.000	0.000	Normal	Update
5 Sensor4	V	Absolute voltage	(X+ 0.000)# 1.000 / 1.000	0.000	Normal	Update
6 Sensor5	V	Absolute voltage	(X+ 0.000)# 1.000 / 1.000	0.000	Normal	Update
7 Sensor6	V	Absolute voltage	(X+ 0.000)# 1.000 / 1.000	0.000	Normal	Update
8 Sensor7	V	Absolute voltage	(X+ 0.000)# 1.000 / 1.000	0.000	Normal	Update

Jméno senzoru může mít max 8 znaků. Jméno jednotky max 5 znaku. Nula se u threshold bere jako nastavená threshold (není vyhodnocena). Lze vždy uložit pouze konfiguraci jednoho senzoru (příslušné tlačítko update uloží konfiguraci daného senzoru. Změny v nastavení u ostatních senzorů budou ztraceny).

Zápis desetinného čísla je limitován floatem, který má 32bitu. 23 bitu mantisa, 8 bitů exponent. V důsledku tohoto omezení může docházet k tomu, že se po uložení např hodnoty 100000.100 vypíše hodnota 100000.093 . Toto není chyba programu, ale uložení floatu.

Actuator settings



Actuator settings

HomatiX NET IO Module
(c) 2008-2009 SECONS Ltd NetIO

SYSTEM

[Home](#)
[Board info](#)

INPUT/OUTPUT

[Sensor status](#)
[1-Wire](#)
[IR remote](#)

LOG MEMORY

[View log](#)

CONFIGURATION

[Sensor settings](#)
[Actuator settings](#)
[Log settings](#)

NETWORK

[IP settings](#)
[Servers settings](#)
[User access](#)
[Access control](#)
[SNMP settings](#)

MAINTENANCE

[Reboot](#)
[Load defaults](#)
[Upgrade firmware](#)
[Log format](#)

HELP

[Online help](#)
[FAQ](#)
[Tech. support](#)
[www.secons.com](#)

	Actuator name	State	
1	<input type="text" value="Actuator"/>	Inverted <input type="button" value="v"/>	<input type="button" value="Update"/>
2	<input type="text" value="Act 1"/>	Normal <input type="button" value="v"/>	<input type="button" value="Update"/>
3	<input type="text" value="Act 2"/>	Normal <input type="button" value="v"/>	<input type="button" value="Update"/>
4	<input type="text" value="Act 3"/>	Normal <input type="button" value="v"/>	<input type="button" value="Update"/>
5	<input type="text" value="Act 4"/>	Normal <input type="button" value="v"/>	<input type="button" value="Update"/>
6	<input type="text" value="Act 5"/>	Normal <input type="button" value="v"/>	<input type="button" value="Update"/>
7	<input type="text" value="Act 6"/>	Normal <input type="button" value="v"/>	<input type="button" value="Update"/>
8	<input type="text" value="Act 7"/>	Normal <input type="button" value="v"/>	<input type="button" value="Update"/>

Jméno actuátoru může být max 8 znaků dlouhé.

Log Settings

SECONS**Log Settings**HomatiX NET IO Module
(c) 2008-2009 SECONS Ltd NetIO

SYSTEM
Home
Board info

INPUT/OUTPUT
Sensor status
1-Wire
IR remote

LOG MEMORY
View log

CONFIGURATION
Sensor settings
Actuator settings
Log settings

NETWORK
IP settings
Servers settings
User access
Access control
SNMP settings

MAINTENANCE
Reboot
Load defaults
Upgrade firmware
Log format

HELP
Online help
FAQ
Tech. support
www.secons.com

System logging:

Log alarm mode:

Periodic sensor logging interval: sec

Digital sensor logging interval: sec

Save

Sensor0	Sensor1	Sensor2	Sensor3	Sensor4	Sensor5	Sensor6	Sensor7
Active	Active	Active	Active	Active	Active	Active	Active
Deactive	Deactive	Deactive	Deactive	Deactive	Deactive	Deactive	Deactive

Actuator	Act 1	Act 2	Act 3	Act 4	Act 5	Act 6	Act 7
Active	Active	Active	Active	Active	Active	Active	Active
Deactivate	Deactivate	Deactivate	Deactivate	Deactivate	Deactivate	Deactivate	Deactivate

System logging – logují se systémové události reboot a posun času o více než 2 minuty. (každou hodinu se načítá aktuální čas z inetu).

Log alarm mode - logování při změně stavu se pak vypisuje „Sensor0 has change to active...“ jinak se vypisuje tabulka s ON/OFF stavy.

Periodic sensor logging interval - perioda, se kterou se logují hodnoty sensoru. Pokud je nula, tak se neloguje.

Digital sensor logging interval – perioda, se kterou se logují stavy sensorů(porovnání s rozhodovací úrovní) a akčních členů. Pokud je nula, tak se neloguje.

Kliknutí na odkaz přepne sledování daného sensoru/akčního členu do stavu, který odkaz vypisuje. Aktuální stav sledování změn je zobrazen jako text (ne odkaz).

NETWORK CONFIG

IP Settings

SECONS Network settings HomatiX NET IO Module
(c) 2008-2009 SECONS Ltd NetIO

SYSTEM
Home
Board info

INPUT/OUTPUT
Sensor status
1-Wire
IR remote

LOG MEMORY
View log

CONFIGURATION
Sensor settings
Actuator settings
Log settings

NETWORK
IP settings
Servers settings
User access
Access control
SNMP settings

MAINTENANCE
Reboot
Load defaults
Upgrade firmware
Log format

HELP
Online help
FAQ
Tech. support
www.secons.com

IP:
Net Mask:
Default Gateway:
DHCP:

[?](#)

Hostname:


Pokud je DHCP povoleno, tak zadaná IP, Net Mask a Default GW se k ničemu nepoužije. Zařízení se bude snažit získat IP, Net Mask a Default GW z DHCP. Dokud toto nastavení nezíská nebude pracovat. (ani přístup na webové rozhraní). Hostname se zobrazuje v horní části obrazovky a slouží k rozlišení (pojmenování) více modulů netio na síti. Název může mít maximálně 15 znaků.

Server settings

SECONS Servers settings		HomatiX NET IO Module (c) 2008-2009 SECONS Ltd NetIO	
SYSTEM		Primary DNS: <input type="text" value="10"/> <input type="text" value="10"/> <input type="text" value="10"/> <input type="text" value="1"/>	
Home Board info		Secondary DNS: <input type="text" value="169"/> <input type="text" value="254"/> <input type="text" value="1"/> <input type="text" value="1"/>	
INPUT/OUTPUT		Network time: <input type="text" value="pool.ntp.org"/>	
Sensor status 1-Wire IR remote		Time zone offset: <input type="text" value="+0200"/>	
LOG MEMORY		<input type="button" value="Save"/>	
View log			
CONFIGURATION			
Sensor settings Actuator settings Log settings			
NETWORK			
IP settings Servers settings User access Access control SNMP settings			
MAINTENANCE			
Reboot Load defaults Upgrade firmware Log format			
HELP			
Online help FAQ Tech. support www.secons.com			

Network time obsahuje adresu NTP network time serveru. Max 32 znaků dlouhá. Nemůže být zadána IP adresa NTP serveru. Time offset je od -1200 do +1200. Udává o kolik hodin je posunutá naše časová zóna oproti UTC (GMT).

User access

**Access list configuration**

HomatiX NET IO Module
(c) 2008-2009 SECONS Ltd NetIO

SYSTEM Home Board info	<table style="width: 100%;"><tr><td>Admin name:</td><td><input type="text" value="admin"/></td></tr><tr><td>Admin password:</td><td><input type="password" value="•••••"/></td></tr><tr><td>Write User name:</td><td><input type="text" value="wuser"/></td></tr><tr><td>Write User password:</td><td><input type="password" value="•••••"/></td></tr><tr><td>Read User name:</td><td><input type="text" value="ruser"/></td></tr><tr><td>Read User password:</td><td><input type="password" value="•••••"/></td></tr><tr><td colspan="2" style="text-align: center;"><input type="button" value="Save"/></td></tr></table>	Admin name:	<input type="text" value="admin"/>	Admin password:	<input type="password" value="•••••"/>	Write User name:	<input type="text" value="wuser"/>	Write User password:	<input type="password" value="•••••"/>	Read User name:	<input type="text" value="ruser"/>	Read User password:	<input type="password" value="•••••"/>	<input type="button" value="Save"/>	
Admin name:		<input type="text" value="admin"/>													
Admin password:		<input type="password" value="•••••"/>													
Write User name:		<input type="text" value="wuser"/>													
Write User password:		<input type="password" value="•••••"/>													
Read User name:		<input type="text" value="ruser"/>													
Read User password:		<input type="password" value="•••••"/>													
<input type="button" value="Save"/>															
INPUT/OUTPUT Sensor status 1-Wire IR remote															
LOG MEMORY View log															
CONFIGURATION Sensor settings Actuator settings Log settings															
NETWORK IP settings Servers settings User access Access control SNMP settings															
MAINTENANCE Reboot Load defaults Upgrade firmware Log format															
HELP Online help FAQ Tech. support www.secons.com															

Username a password můžou mít maximálně 8 znaků. Slouží k zabezpečení přístupu k webovému rozhraní NetIO. Definuje tři uživatele s různými oprávněním přístupu na jednotlivé stránky NetIO.

Access control

SECONS**Access control**HomatiX NET IO Module
(c) 2008-2009 SECONS Ltd NetIO

SYSTEM
Home
Board info

INPUT/OUTPUT
Sensor status
1-Wire
IR remote

LOG MEMORY
View log

CONFIGURATION
Sensor settings
Actuator settings
Log settings

NETWORK
IP settings
Servers settings
User access
Access control
SNMP settings

MAINTENANCE
Reboot
Load defaults
Upgrade firmware
Log format

HELP
Online help
FAQ
Tech. support
www.secons.com

Access IP 1	10	10	10	0
Access Mask 1	255	255	255	0
<input type="button" value="Save"/>				

Access IP 2	0	0	0	0
Access Mask 2	0	0	0	0
<input type="button" value="Save"/>				

Povolení přístupu na webové rozhraní z dvou sítí. Zadaná IP je automaticky andovaná se zadanou maskou a tak je uložena a dále zobrazovaná. (např. Uživatel zadá IP:192.168.1.245, Maska: 255.255.255.0 => IP se uloží jako 192.168.1.0).

SNMP settings

SECONS**SNMP Settings**HomatiX NET IO Module
(c) 2008-2009 SECONS Ltd NetIO

SYSTEM

Home
Board info

INPUT/OUTPUT

Sensor status
1-Wire
IR remote

LOG MEMORY

View log

CONFIGURATION

Sensor settings
Actuator settings
Log settings

NETWORK

IP settings
Servers settings
User access
Access control
SNMP settings

MAINTENANCE

Reboot
Load defaults
Upgrade firmware
Log format

HELP

Online help
FAQ
Tech. support
www.secons.com

Read community:	<input type="text" value="NetIOR"/>
Write community:	<input type="text" value="NetIOW"/>
<input type="button" value="Save"/>	

Access IP 1	<input type="text" value="0"/>	<input type="text" value="0"/>	<input type="text" value="0"/>	<input type="text" value="0"/>
Access Mask 1	<input type="text" value="0"/>	<input type="text" value="0"/>	<input type="text" value="0"/>	<input type="text" value="0"/>
<input type="button" value="Save"/>				

Access IP 2	<input type="text" value="0"/>	<input type="text" value="0"/>	<input type="text" value="0"/>	<input type="text" value="0"/>
Access Mask 2	<input type="text" value="0"/>	<input type="text" value="0"/>	<input type="text" value="0"/>	<input type="text" value="0"/>
<input type="button" value="Save"/>				

Maximální délka read/write community je 8 znaků.

Povolení přístupu k SNMP z dvou sítí. Zadaná IP je automaticky andovaná se zadanou maskou a tak je uložena a dále zobrazovaná. (např. Uživatel zadá IP:192.168.1.245, Mask: 255.255.255.0 => IP se uloží jako 192.168.1.0).

MAINTENANCE

Reboot

SECONS Device Reboot HomatiX NET IO Module
(c) 2008-2009 SECONS Ltd NetIO

SYSTEM
Home
Board info

INPUT/OUTPUT
Sensor status
1-Wire
IR remote

LOG MEMORY
View log

CONFIGURATION
Sensor settings
Actuator settings
Log settings

NETWORK
IP settings
Servers settings
User access
Access control
SNMP settings

MAINTENANCE
Reboot
Load defaults
Upgrade firmware
Log format

HELP
Online help
FAQ
Tech. support
www.secons.com

Clicking the button device will reboot.

Reboot

Are you sure to continue?

Reboot bude chvíli trvat. Bude se muset znovu načíst aktuální čas. Bude zaznamenáno do logu. Pokud je povoleno DHCP bude se muset znovu načíst IP.

Load defaults

SECONS Load default settings HomatiX NET IO Module
(c) 2008-2009 SECONS Ltd NetIO

SYSTEM
Home
Board info

INPUT/OUTPUT
Sensor status
1-Wire
IR remote

LOG MEMORY
View log

CONFIGURATION
Sensor settings
Actuator settings
Log settings

NETWORK
IP settings
Servers settings
User access
Access control
SNMP settings

MAINTENANCE
Reboot
Load defaults
Upgrade firmware
Log format

HELP
Online help
FAQ
Tech. support
www.secons.com

Clicking the button will erase all settings (network settings, ACL settings) and will load default values.

Load defaults

Are you sure to continue?

Nastaví v zařízení defaultní konfiguraci tzn. smaze aktuální. Po load defaults bude nutné znovu odsouhlasit user agreement. Zařízení bude restartováno. Dojde také ke smazání jmen sensorů a akčních členů včetně jednotek a rovnic na výpočet hodnoty sensoru.

Upgrade firmware

SECONS Upgrade firmware **HomatiX NET IO Module**
(c) 2008-2009 SECONS Ltd NetIO

SYSTEM
Home
Board info

INPUT/OUTPUT
Sensor status
1-Wire
IR remote

LOG MEMORY
View log

CONFIGURATION
Sensor settings
Actuator settings
Log settings

NETWORK
IP settings
Servers settings
User access
Access control
SNMP settings

MAINTENANCE
Reboot
Load defaults
Upgrade firmware
Log format

HELP
Online help
FAQ
Tech. support
www.secons.com

Clicking the button device will jump to bootloader for 20 seconds. Firmware can be uploaded using tftp.

Firmware upgrade

Are you sure to continue?

Přepne zařízení do bootloaderu na 20 vteřin, kdy lze pomocí tftp nahrát nový firmware. Během uploadování firmwaru nesmíme zařízení odpojit od napájení. Pokud je zařízení přepnuté do bootloaderu, tak nejsou dostupné žádné funkce NetIO (webové rozhraní, SNMP, logování, měření...)

Log format

SECONS **Log format** HomatiX NET IO Module
(c) 2008-2009 SECONS Ltd NetIO

SYSTEM Home Board info	<p>Log format will erase all logs items.</p> <p><input type="button" value="Erase"/></p> <p>Are you sure to continue?</p>
INPUT/OUTPUT Sensor status 1-Wire IR remote	
LOG MEMORY View log	
CONFIGURATION Sensor settings Actuator settings Log settings	
NETWORK IP settings Servers settings User access Access control SNMP settings	
MAINTENANCE Reboot Load defaults Upgrade firmware Log format	
HELP Online help FAQ Tech. support www.secons.com	

Kliknutím na tlačítko Erase dojde ke smazání všech záznamů v logu. Zařízení není restartováno.

SNMP

Uživatelský podstrom MIB

1.3.6.1.4.1.33857.1 sysInfo

- 1.3.6.1.4.1.33857.1.1.0 – sysInfo
- 1.3.6.1.4.1.33857.1.2.0 - vers
- 1.3.6.1.4.1.33857.1.3.0 – adte
- 1.3.6.1.4.1.33857.1.10.0 - Brown-out Reset Status bit
- 1.3.6.1.4.1.33857.1.11.0 - Power-on Reset Status bit
- 1.3.6.1.4.1.33857.1.12.0 - Watchdog Timer Time-out Flag bit
- 1.3.6.1.4.1.33857.1.13.0 - RESET Instruction Flag bit
- 1.3.6.1.4.1.33857.1.14.0 - Configuration Mismatch Flag bit

1.3.6.1.4.1.33857.10 - Analog input sensor names and Digital output actuator names

- 1.3.6.1.4.1.33857.10.1.0 – Sensor1
- 1.3.6.1.4.1.33857.10.2.0 – Sensor2
- 1.3.6.1.4.1.33857.10.3.0 – Sensor3
- 1.3.6.1.4.1.33857.10.4.0 - Sensor4
- 1.3.6.1.4.1.33857.10.5.0 - Sensor5
- 1.3.6.1.4.1.33857.10.6.0 - Sensor6
- 1.3.6.1.4.1.33857.10.7.0 - Sensor7
- 1.3.6.1.4.1.33857.10.8.0 - Sensor8
- 1.3.6.1.4.1.33857.10.9.0 - Act1
- 1.3.6.1.4.1.33857.10.10.0 – Act2
- 1.3.6.1.4.1.33857.10.11.0 - Act3
- 1.3.6.1.4.1.33857.10.12.0 - Act4
- 1.3.6.1.4.1.33857.10.13.0 - Act5
- 1.3.6.1.4.1.33857.10.14.0 - Act6
- 1.3.6.1.4.1.33857.10.15.0 - Act7
- 1.3.6.1.4.1.33857.10.16.0 - Act8

1.3.6.1.4.1.33857.11.9.0 - Analog input sensor states and Digital output actuator states

- 1.3.6.1.4.1.33857.11.1.0 – Sensor1
- 1.3.6.1.4.1.33857.11.2.0 – Sensor2
- 1.3.6.1.4.1.33857.11.3.0 - Sensor3

- 1.3.6.1.4.1.33857.11.4.0 - Sensor4
- 1.3.6.1.4.1.33857.11.5.0 - Sensor5
- 1.3.6.1.4.1.33857.11.6.0 - Sensor6
- 1.3.6.1.4.1.33857.11.7.0 - Sensor7
- 1.3.6.1.4.1.33857.11.8.0 - Sensor8
- 1.3.6.1.4.1.33857.11.9.0 – Act1
- 1.3.6.1.4.1.33857.11.10.0 – Act2
- 1.3.6.1.4.1.33857.11.11.0 - Act3
- 1.3.6.1.4.1.33857.11.12.0 - Act4
- 1.3.6.1.4.1.33857.11.13.0 - Act5
- 1.3.6.1.4.1.33857.11.14.0 - Act6
- 1.3.6.1.4.1.33857.11.15.0 - Act7
- 1.3.6.1.4.1.33857.11.16.0 - Act8

1.3.6.1.4.1.33857.12 - Analog input sensor values raw float

- 1.3.6.1.4.1.33857.12.1.0 – Sensor1
- 1.3.6.1.4.1.33857.12.2.0 – Sensor2
- 1.3.6.1.4.1.33857.12.3.0 – Sensor3
- 1.3.6.1.4.1.33857.12.4.0 – Sensor4
- 1.3.6.1.4.1.33857.12.5.0 – Sensor5
- 1.3.6.1.4.1.33857.12.6.0 – Sensor6
- 1.3.6.1.4.1.33857.12.7.0 – Sensor7
- 1.3.6.1.4.1.33857.12.8.0 - Sensor8

1.3.6.1.4.1.33857.13 - Analog input sensor values text readable form

- 1.3.6.1.4.1.33857.13.1.0 – Sensor1
- 1.3.6.1.4.1.33857.13.2.0 - Sensor2
- 1.3.6.1.4.1.33857.13.3.0 – Sensor3
- 1.3.6.1.4.1.33857.13.4.0 – Sensor4
- 1.3.6.1.4.1.33857.13.5.0 – Sensor5
- 1.3.6.1.4.1.33857.13.6.0 – Sensor6
- 1.3.6.1.4.1.33857.13.7.0 – Sensor7
- 1.3.6.1.4.1.33857.13.8.0 - Sensor8

1.3.6.1.4.1.33857.14 - Analog input sensor values integer part

- 1.3.6.1.4.1.33857.14.1.0 - Sensor1
- 1.3.6.1.4.1.33857.14.2.0 - Sensor2
- 1.3.6.1.4.1.33857.14.3.0 - Sensor3
- 1.3.6.1.4.1.33857.14.4.0 - Sensor4
- 1.3.6.1.4.1.33857.14.5.0 - Sensor5
- 1.3.6.1.4.1.33857.14.6.0 - Sensor6
- 1.3.6.1.4.1.33857.14.7.0 - Sensor7
- 1.3.6.1.4.1.33857.14.8.0 - Sensor8

Systemový podstrom MIB

1.3.6.1.2.1 - SNMP MIB-2 System

- 1.3.6.1.2.1.1.1.0 - sysDescr (string)
- 1.3.6.1.2.1.1.2.0 - sysObjectID (OID)
- 1.3.6.1.2.1.1.3.0 - sysUpTime (timeTicks)
- 1.3.6.1.2.1.1.4.0 - sysContact (string)
- 1.3.6.1.2.1.1.5.0 - sysName (string)
- 1.3.6.1.2.1.1.6.0 - sysLocation (string)

Hodnoty defaultního nastavení

Jméno	Hodnota
MAC	Převzato z bootloaderu.
IP	192.168.1.245
NetMask	255.255.255.0
GateWay	192.168.1.1
DHCP	ON
Hostname	NetIO device
Primary DNS	192.168.1.1
Secondary DNS	169.254.1.1
Admin username	admin
Admin password	admin
Read user username	ruser
Read user password	ruser
Write user username	wuser
Write user password	Wuser
Network time server	pool.ntp.org
Time zone offset	+0000
Access IP 1	0.0.0.0
Access Mask 1	0.0.0.0
Access IP 2	0.0.0.0
Access Mask 2	0.0.0.0
Read community	NetIOR
Write community	NetIOW
Access SNMP IP	0.0.0.0
Access SNMP Mask	0.0.0.0
Logování	Loguj pouze systémové události. Alarm mode vypnutý.